



Flameproof & Weatherproof Bulkhead Fixture

● Technical Data : LB 31...Series

ENCLOSURE :

Ex-d, IIA & IIB AS PER IS/IEC 60079-1:2007

PROTECTION :

IP-65 AS PER IS/IEC 60529:2001

AREA CLASSIFICATION :

ZONE -1 & 2

CERTIFICATION :

ERTL(E)/TES/FO42/0088/07-04

MATERIAL OF CONSTRUCTION :

PRESSURE DIE CAST AL. ALLOY.

RATING & TEMPERATURE CLASSIFICATION :

2x26W CFL, 250V, AC. 50 Hz. T6

COMPONENTS :

- 1) CONTROL GEAR WITH BALLAST
- 2) LAMP HOLDER BI-PIN TYPE
- 3) 2 WAY TERMINAL BLOCK

TRANSPARENT PART :

HEAT RESISTANT & TOUGHENED CLEAR FLAT GLASS

INTERNAL REFLECTOR :

MIRROR OPTICS AL. ANODISED

FINISH :

DARK ADMIRALTY GREY EPOXY POWDER COATED 632 AS PER IS:5.

EARTHING :

1 No. INSIDE & 2 Nos. OUTSIDE,

CABLE ENTRY :

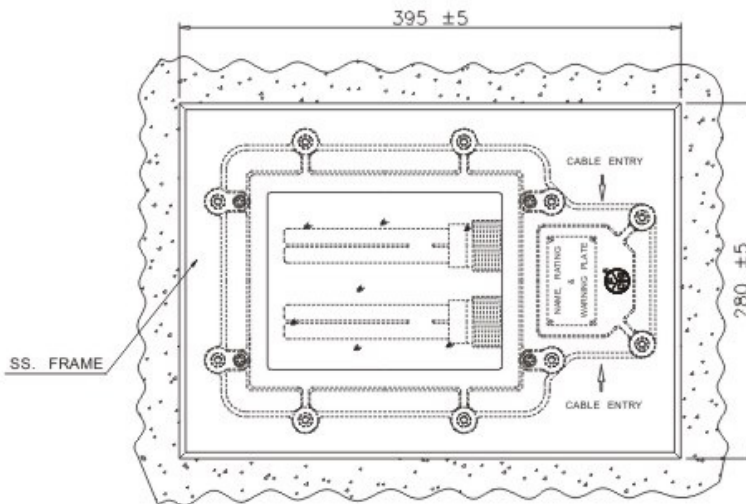
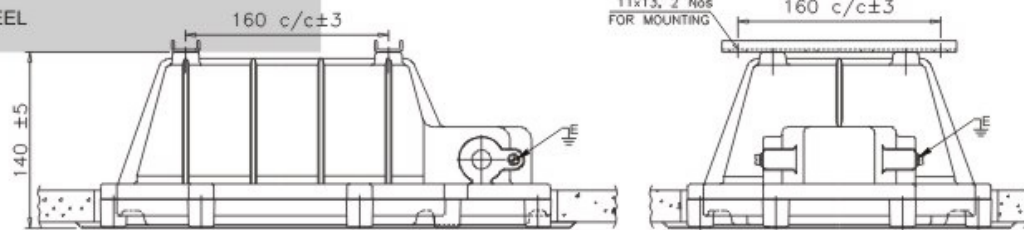
M20 x 2 Nos.

NAME PLATE :

STAINLESS STEEL



BOTTOM OPENABLE



FALSE CEILING CUT OUT
360 x 245 +3 mm