



SINCE 1974

Explosionproof LED Tube Light Fixture For Zone - 1 & 2

● Technical Data : LT 31140

ENCLOSURE :

Ex-d, GAS Gr. IIA & IIB AS PER IS/IEC 60079-1:2007 & IS/IEC 60079-0:2004

PROTECTION :

IP-65 AS PER IS/IEC 60529:2001

AREA CLASSIFICATION :

ZONE 1 & 2

MATERIAL OF CONSTRUCTION :

PRESSURE DIE CAST ALUMINIUM ALLOY

RATING & TEMPERATURE CLASSIFICATION :

1 x 20W LED, 250V, AC 50/60Hz & T6

TRANSPARENT PART :

HEAT, RESISTANT & TOUGHENED CLEAR DOME GLASS

COMPONENTS :

- 1) LED MODULE 20W - 1 No.
- 2) SUITABLE INBUILT DRIVER
- 3) 2 WAY TERMINAL BLOCK

WIRE GUARD :

M.S GALVANIZED & WHITE EPOXY PAINTED.

FINISH :

DARK ADMIRALTY GREY EPOXY POWDER COATED 632

HARDWARE :

STAINLESS STEEL

EARTHING :

1 No. INSIDE & 2 Nos. OUTSIDE

CABLE ENTRY :

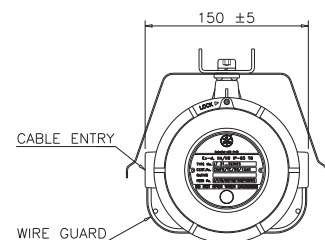
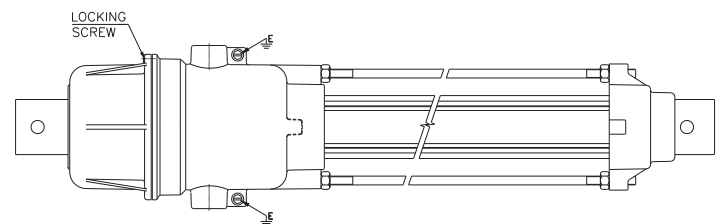
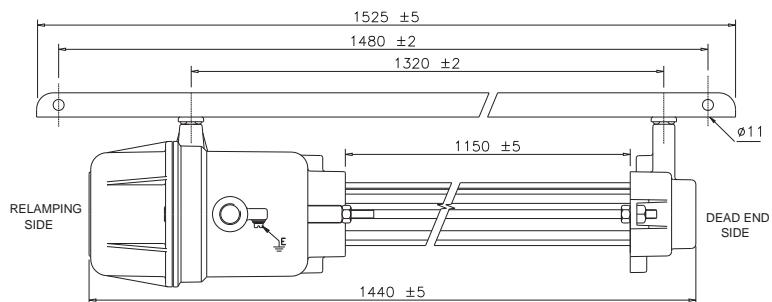
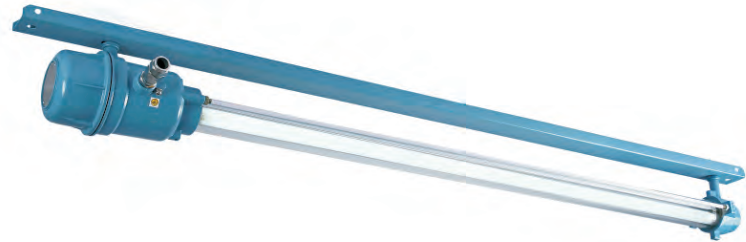
M20 x 2 Nos.

OPTIONAL ACCESSORIES AT EXTRA COST :

- 1) EXTERNAL REFLECTOR
- 2) WIRE GUARD
- 3) PAINT SHADE AS PER CLIENT REQUIREMENT.
- 4) STAINLESS STEEL WIRE GUARD

SPECIAL FEATURES :

- A) SUPERIOR POWDER COATED EPOXY FINISH
- B) PRESSURE DIE CAST ENCLOSURE
- C) REPLACES 1x36/40W FTL
- D) ENERGY EFFICIENT AS IT CONSUMES ONLY 20W
- E) STD. COLOUR TEMPERATURE 6500K



FOR SINGLE TUBELIGHT FITTING